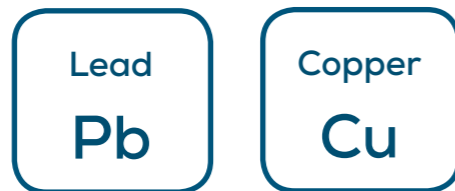


SA1100 Scanning Analyzer

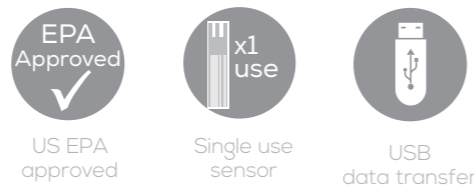
The SA1100 Scanning Analyzer is the only US EPA approved portable measurement of lead and copper. Utilising disposable sensor technology, get results in a matter of minutes.

This instrument can test for the following:



Using the principle of voltammetry, the SA1100 Scanning Analyzer can accurately determine concentrations of lead and copper in a wide range of sample types.

The SA1100 Scanning Analyzer has a waterproof USB port for instrument set-up and data download of the result memory. USEPA-approved, field analysis for lead and copper has never been so simple.



Accurate and sensitive – with a lower limit of detection of 2 ppb of lead or 50 ppb of copper, the SA1100 can detect the smallest heavy metal contamination.

Waterproof and battery powered field instrument – supplied in a shoulder case with all accessories required for immediate testing.

Connect your instrument to a PC to export results, upgrade software and fix the instrument settings.

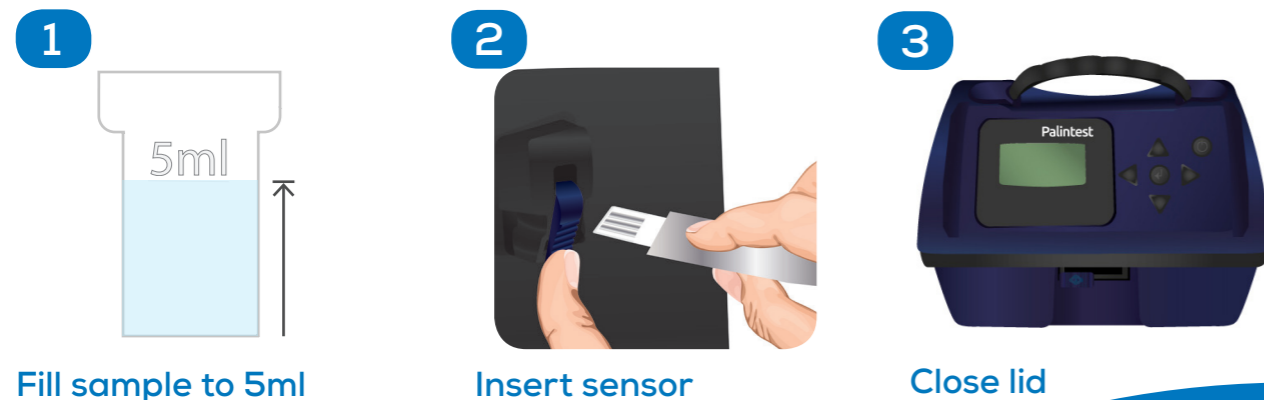
Technical Specification

Measuring System	Voltammetry
Range	2 – 100 µg/l Lead 50 – 2000 µg/l Copper
Display	High clarity LCD with backlight
Optimum Temperature	15 – 30°C
User Interface	English, French, Spanish, German and Italian language options
Connectivity	USB-B
Data Storage	500 results including date, time, test ID and sample ID
Size (W x L x H) & Weight	170 x 126 x 116mm, 975g (including batteries)
Power Supply	4 x AA batteries



Product	Code	Contents
Lead Scanning Analyzer Kit	PT430	SA1100 Scanning Analyzer instrument, sensor pack (PT 435), check standard (CS 640), calibration chip, instructions
Copper Scanning Analyzer Kit	PT431	SA1100 Scanning Analyzer instrument, sensor pack (PT 436), check standard (CS 640), calibration chip, instructions
Replacement lead sensor pack	PT435	Replacement lead sensor pack containing x10 sensors, x10 tablets, x10 graduated tubes, crushing rods and calibration chip.
Replacement copper sensor pack	PT436	Replacement copper sensor pack containing x10 sensors, x10 tablets, x10 graduated tubes, crushing rods and calibration chip.

Simple measurement process - with minimal training required.



Accessories

Scanning Analyzer check standards CS640