

Palintest

Water Analysis Technologies

Manganese HR

Photometric test for Manganese (high range) in natural water

COLOUR CHANGE

Colourless to Orange/Red

RANGE

0 - 5 mg/L Mn

TECHNICAL RESOURCE

Manganese HR Test Method, Technical Information

NOTES

Because manganese is adsorbed on to surfaces of sample containers. Test as soon as possible after collection
Ensure that all glassware is scrupulously clean. Acid rinsing is highly recommended

01



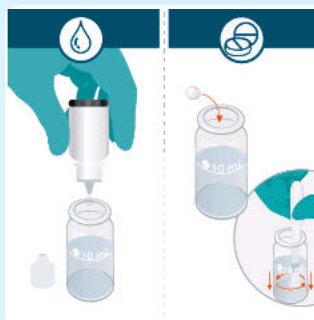
Fill to the 10 mL line with sample.

02



Use this to "blank" the instrument. Place in cell holder and press Blank.

03



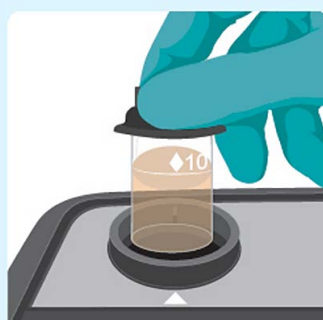
Prepare sample by adding two drop of Mn HR liquid or a Mn HR No2 tablet.

04



Then, add a Manganese HR No1 tablet. Crush and stir until fully dissolved.

05



Place in the cell holder and press Measure.

06



Allow timer to count down 5 minutes. The concentration of Manganese will then be displayed.